



**VMRD**

PO Box 502, Pullman, WA 99163 USA

Telephone: + 1 (509) 334-5815

Fax: + 1 (509) 332-5356

E-mail: [vmrd@vmrd.com](mailto:vmrd@vmrd.com)

Web site: <http://www.vmrd.com>

## Certificate of Analysis

### **MOUSE IgM** **FITC ANTI-IMMUNOGLOBULIN** **CONJUGATE**

**CATALOG NO.:** 096-1

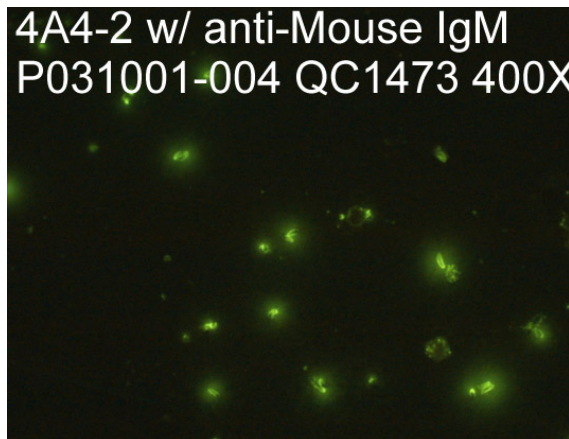
re-order as CJ-F-MURM-1ML

**VOLUME:** 1 ml

**LOT:** P031001-004

**EXPIRATION:** 16 December 2010

4A4-2 w/ anti-Mouse IgM  
P031001-004 QC1473 400X



**DESCRIPTION:** Anti-Mouse IgM polyclonal antiserum conjugated to fluorescein isothiocyanate.  $\mu$ -chain specific. Goat origin. Affinity purified. Ready for use.

**QUALITY CONTROL METHOD:** Indirect FA using VMRD *Neospora caninum* FA substrate slides (catalog no. SLD-IFA-NC), mouse origin 4A4-2 monoclonal antibody (catalog no. 4A4-2-0.1); VMRD, Inc.

**Specific Reaction:** 4+ positive on 4A4-2 MoAb at 1:100 in FA Serum Diluting Buffer (FASDB-1ML or 10ML).

**Other Reactions or Comments:** No background.

**INTENDED USE:** These antibodies are optimized for indirect fluorescent antibody (IFA) assays. They have not been evaluated for flow cytometry and are unlikely to work for flow cytometry. *We do not recommend using them in fluorescent antibody cell sorting (FACS).*

**STORAGE:** This conjugate is provided in liquid form and should be stored at 4-8°C. DO NOT FREEZE! If conjugate becomes cloudy it should be discarded. This conjugate contains 0.09% sodium azide as a preservative.

FOR *IN VITRO* LABORATORY USE ONLY.

**WARRANTY:** VMRD, Inc. warrants that this product is as described in the quantity and contents stated on the label at the time of delivery to the customer. NO OTHER WARRANTIES, EXPRESS OR IMPLIED, ARE MADE BEYOND THE LABEL DESCRIPTION, INCLUDING WARRANTIES OF MERCHANTABILITY OR FITNESS FOR A PARTICULAR USE. Remedy is limited to replacement of the product or refund of the purchase price. VMRD, Inc. is not liable for property damage, personal injury, or economic loss caused by the product. The information listed in this information sheet is provided for reference only, and should not be substituted for the user's own incoming material quality control.