

**VMRD**

PO Box 502, Pullman, WA 99163 USA

Telephone: + 1 (509) 334-5815

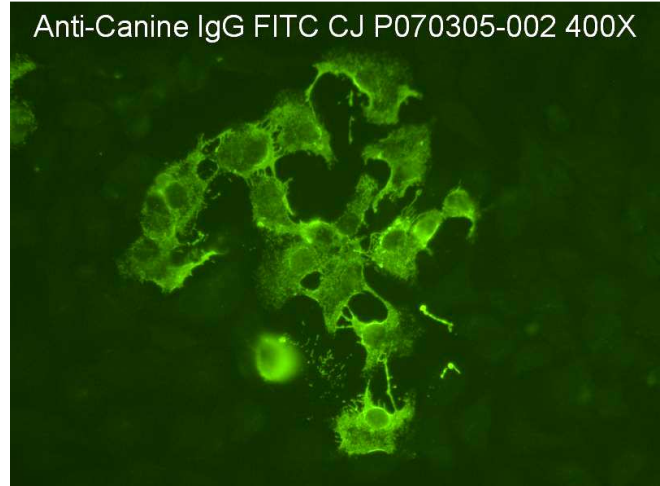
Fax: + 1 (509) 332-5356

E-mail: vmrd@vmrd.comWeb site: <http://www.vmrd.com>

Certificate of Analysis

CANINE IgG **FITC ANTI-IMMUNOGLOBULIN** **CONJUGATE**

CATALOG NO.: 035-1
VOLUME: 1 ml
LOT: P070305-002
EXPIRATION: 27 March 2009



DESCRIPTION: Anti-Canine IgG polyclonal antiserum conjugated to fluorescein isothiocyanate. Caprine origin. Ready for use.

QUALITY CONTROL METHOD: IFA using VMRD, Inc. Canine Distemper Virus FA Substrate Slides (catalog no. SLD-IFA-CDV), CDV IgG Positive Control (catalog no. 211-P-CDV-G), CDV IgM Positive Control (catalog no. 211-P-CDV-M), Anti-Canine IgM FITC Conjugate (catalog no. 036-10); Canine Parvovirus FA Substrate Slides (catalog no. SLD-IFA-CPV), CPV IgG Positive Control (catalog no. 211-P-CPV-G), CPV IgM Positive Control (catalog no. 211-P-CPV-M), Anti-Canine IgM FITC Conjugate (catalog no. 036-10).

Specific Reaction: 4+ on CDV IgG.

Other Reactions or Comments: No background. **Note:** Because goats commonly have antibodies to *Toxoplasma*, this goat-origin conjugate may bind directly to VMRD's *Toxoplasma gondii* substrate, catalog no. SLD-IFA-TOXO, making a negative serum appear positive; use catalog no. 035-AP-1 (rabbit-origin affinity purified conjugate) instead.

STORAGE: This conjugate is provided in liquid form and should be stored at 4-8°C. **DO NOT FREEZE!** If conjugate becomes cloudy it should be discarded. This conjugate contains 0.09% sodium azide as a preservative.

FOR *IN VITRO* LABORATORY USE ONLY.

WARRANTY: VMRD, Inc. warrants that this product is as described in the quantity and contents stated on the label at the time of delivery to the customer. NO OTHER WARRANTIES, EXPRESS OR IMPLIED, ARE MADE BEYOND THE LABEL DESCRIPTION, INCLUDING WARRANTIES OF MERCHANTABILITY OR FITNESS FOR A PARTICULAR USE. Remedy is limited to replacement of the product or refund of the purchase price. VMRD, Inc. is not liable for property damage, personal injury, or economic loss caused by the product. The information listed in this information sheet is provided for reference only, and should not be substituted for the user's own incoming material quality control.